



HAWAII CHAPTER
NATIONAL ASSOCIATION OF
CATERING EXECUTIVES

Newsletter

June 2010

As you reach ever higher to new career goals and business opportunities, as you work to keep up with our changing industry, you'll meet plenty of challenges. NACE membership helps you overcome these challenges—giving you the right information, tools and resources at the right time.

Through NACE, find the connections that open doors. Find the educational seminars that keep your business competitive. Find ideas that push you to the cutting edge. Find access to over 40 local professional chapters and stay plugged in to your network. Find industry news and trends and directories to help you every step of the way.

Membership in NACE offers you extraordinary benefits like these:

Premiere, industry-specific education:

- Networking and connecting with professionals at all experience levels
- Local and national seminars, conferences, and awards programs
- Internationally recognized professional certification
- Breaking industry news and trends
- Directories, resources and so much more...

NACE membership helps you market your business, increase your sales, advance your career and learn about the very latest in menu design, presentation, and décor. As the oldest, largest professional association for the catering, events and convention services industries, NACE gives you the resources you need when you need them.

Board of Directors



HAWAII CHAPTER
NATIONAL ASSOCIATION OF
CATERING EXECUTIVES

June 2010 Newsletter
Page Two



President: Herb Yamamoto

Special Events Planner at Creations in Catering
PO Box 17805, Honolulu, HI 96817-0805
Phone: 808-521-7101 / Fax: 808-543-0105
Email: herby@hawaiicaterers.com / Website: www.hawaiicaterers.com



Immediate Past President: Dianna K. Shitanishi, CPCE, CMP

Owner of Hawaii Weddings and Events
587 Pakala Street, Honolulu, HI 96825
Phone: 808-782-4514
Email: info@hawaiiweddingsandevents.com
Website: www.hawaiiweddingsandevents.com



1st Vice President: Josette Murai

Convention Services Manager at Hawaii Visitors & Convention Bureau
2270 Kalakaua Avenue, Suite 801, Honolulu, Hawaii 96815
Phone: 808-924-0261 / Fax: 808-924-0293
Email: jmurai@hvcb.org / Website: www.BusinessAloha.com



2nd Vice President: Linda Leung

Catering & Conference Services Manager at Hawaii Prince Hotel Waikiki
100 Holomoana Street, Honolulu, HI 96815
Phone: 808-944-4486 / Fax: 808-944-4453
Email: lleung@hiprince.com / Website: www.princeresortshawaii.com



Treasurer: Dora Young

Catering Sales Manager at Hale Koa Hotel
2055 Kalia Road, Honolulu, HI 96815-1998
Phone: 808-955-9608 / Fax: 808-955-9613
Email: dora@halekoa.com / Website: www.halekoa.com



Secretary: Kelly Sugano

Owner of A Perfect Day
1019 Waimanu St., #101, Honolulu, HI 96814
Phone: 808-497-3339 / Fax: 808-591-8113
Email: kelly@aperfectdayhawaii.com / Website: www.aperfectdayhawaii.com



Event Professional: Marino Regalado

Certified Professional Master of Ceremonies
Director of Entertainment at Ninja Entertainment
Honolulu, HI
Phone: 808-372-9176
Website: www.ninjaentertainment.com



HAWAII CHAPTER
NATIONAL ASSOCIATION OF
CATERING EXECUTIVES

Membership Spotlight:



Monica Toguchi

Vice President and
Granddaughter of Seiichi Toguchi,
founder of Highway Inn

June 2010 Newsletter
Page Three



As part of their extensive renovation, Highway Inn recently increased their seating capacity by 40 percent. To accommodate the growth, the west side favorite hired new staff members to ensure great quality and service for all of their patrons. Another exciting development is the opening up of the main restaurant to the seafood market next door, which is also owned and operated by Highway Inn. Diners now have direct access to the fresh seafood located in the market, which includes twenty varieties of poke.

The renovation couldn't have come at a better time. On the evening of April 5th, the celebration continued when Highway Inn was featured on the Food Network's *Diners, Drive-Ins, and Dives* with Nico's at Pier 38, Hank's Haute Dogs, Rainbow Drive-In, and Poke Stop. With its nostalgic makeover and new rollback prices, Highway Inn was the perfect place for viewers to get a true taste of Hawaii.

Highway Inn Inc. 94-226 Leoku Street, Waipahu, Hawaii 96797

Phone: (808) 677-4345 / Fax: (808) 671-8653

info@myhighwayinn.com / Website: www.myhighwayinn.com

About Highway Inn:

Highway Inn first opened its doors during the fall of 1947 by Seiichi and Sachiko "Nancy" Toguchi. Located on Farrington Highway in Waipahu, it was originally opened as a way for the Toguchis to feed their seven children. Then in the 1960s Toguchi saw an opportunity, he moved Highway Inn to Depot Road and began serving Hawaiian and American food to the employees of the Waipahu Sugar Mill. In 1984, under the ownership of his son, Bobby, the restaurant moved to its current location on Leoku Street and continues its longtime tradition of serving fresh Hawaiian food daily, such as their signature beef stew, pipikaula and laulau.

Joining NACE in 2010

Welcome to our **NEW**
members!!



HAWAII CHAPTER
NATIONAL ASSOCIATION OF
CATERING EXECUTIVES

*June 2010 Newsletter
Page Four*



Karina Abrams

Waialae Country Club
4997 Kahala Avenue, Honolulu, HI 96816
Phone: 808-748-4258



Benjamin Bautista

Exclusive Sound Entertainment
Phone: 808-620-2532
Email: exclusivesound@gmail.com



Jan Brenner

Star Theme Partys, Inc. in association with Koa
Entertainment Inc.
Phone: 808-689-1800
Email: starozark@aol.com



Norman Higashi

Koolau Ballrooms & Conference Center
45-550 Kionaole Road, Kaneohe, HI 96744
Phone: 808-954-7000
Website: koolauballrooms.com

Joining NACE in 2010

Welcome to our **NEW**
members!!



HAWAII CHAPTER
NATIONAL ASSOCIATION OF
CATERING EXECUTIVES

June 2010 Newsletter
Page Five

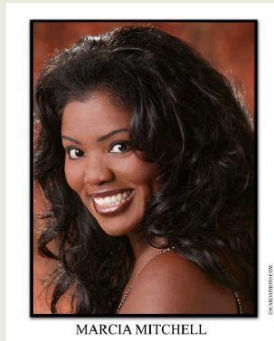


Carrie Lance

Cherished in Hawaii Wedding

Phone: 808-489-9547

Email: cherished@hawaii.rr.com



Marcia Mitchell

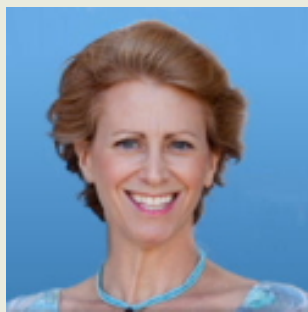
Marcia Mitchell Music Inc.

Phone: 877-352-2263 or 561-963-5056

Serving New York, Miami, Los Angeles, Hawaii

Email: mmmbookings@aol.com

Website: <http://www.marciamitchellmusic.com>



Kathi Saks

Chef Kathi

In Home Private Chef Services

Phone: 808-489-6530

Website: www.chefkathi.com



Dennis Young

Tents Hawaii Inc dba Hawaii Tents & Events

Phone: 808-677-8785

Email: dennis@hawaiitents.com



HAWAII CHAPTER
NATIONAL ASSOCIATION OF
CATERING EXECUTIVES

*June 2010 Newsletter
Page Six*

*A very big
Mahalo to:*

*Susan O'Donnell
Aloha Wedding Planners*



Fundraiser extraordinaire!

This year we did TWO fundraisers just a few months apart ... January's food & wine event with Jerry Edwards and May's Tasty Travels II.

Susan took the reins as chairperson for both and did such a fabulous job (in addition to her real job). Her countless hours and dedication is totally appreciate by everyone in NACE Hawaii Chapter especially the board.

